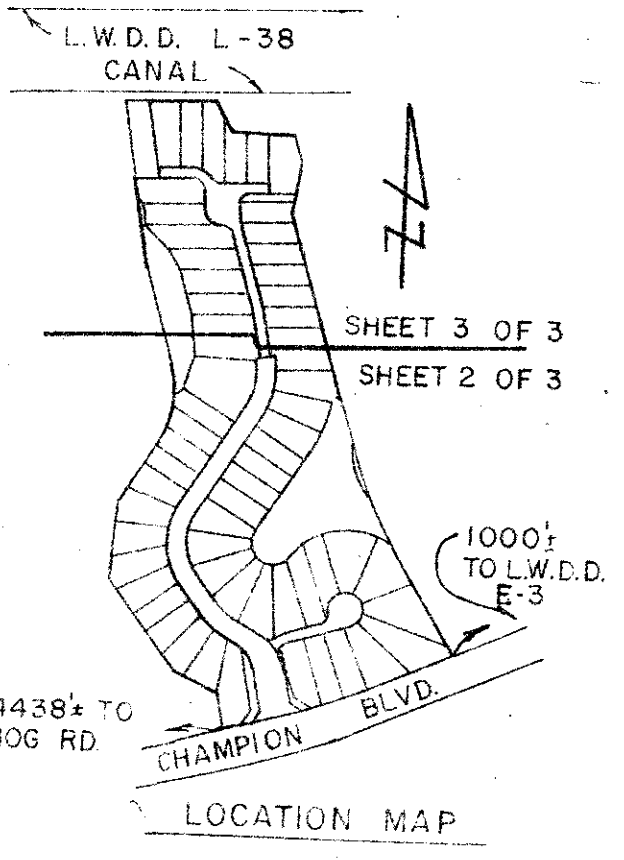


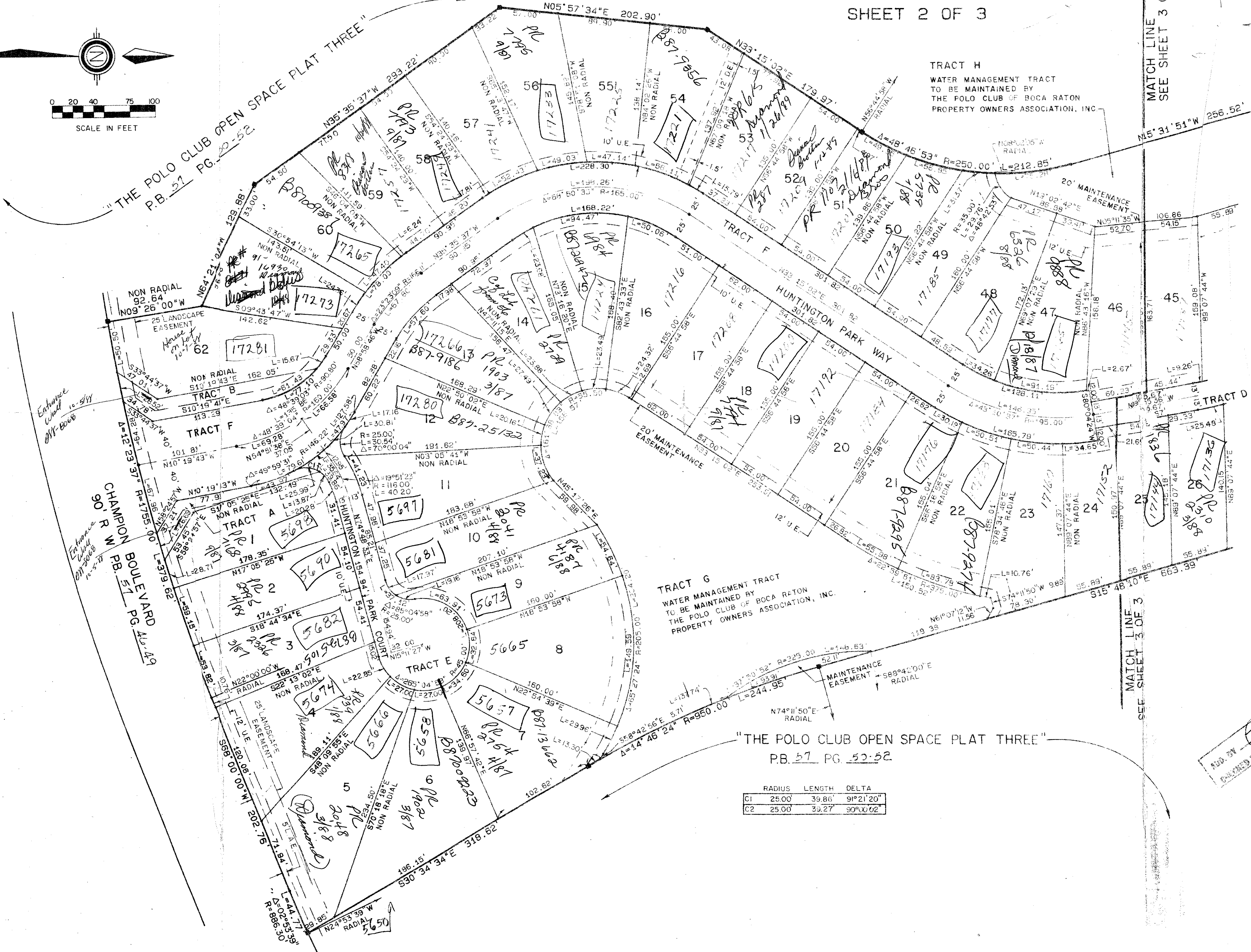
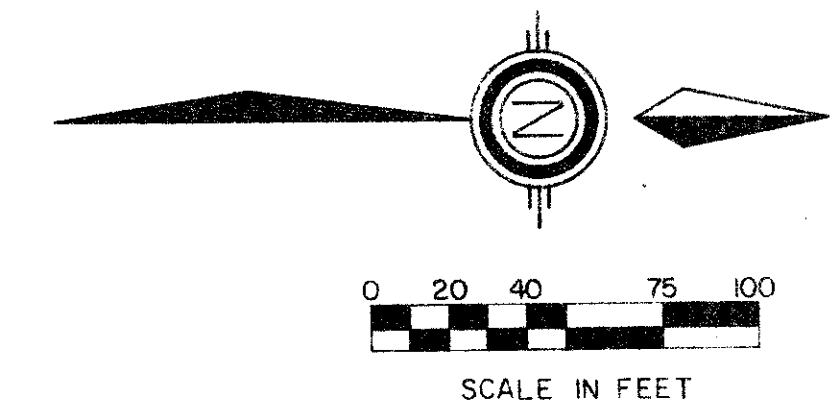
HUNTINGTON

A PART OF THE POLO CLUB P.U.D.
BEING A REPLAT OF A PORTION OF TRACT III, "THE POLO CLUB PLAT II"
SITUATE IN SECTION 35, TOWNSHIP 46 SOUTH, RANGE 42 EAST
PALM BEACH COUNTY, FLORIDA

SHEET 2 OF 3



STATE OF FLORIDA
COUNTY OF PALM BEACH
THIS PLAT WAS FILED FOR
RECORD _____ DAY OF _____
AD, 1987 AND DULY RECORDED
IN PLAT BOOK _____ ON PAGES
_____ AND _____
JOHN B. DUNKLE, CLERK
BY: _____, D.C.



35/119/112
SUBDIVISION - Huntington
BOOK 57
FLOOD ZONE B
QUAD # 37
PUD NAME Polo Club PUD

"THE POLO CLUB OPEN SPACE PLAT THREE"
P.B. 57 PG. 52-52

RADIUS	LENGTH	DELTA
C1 25.00	39.86'	91°21'20"
C2 25.00	39.27'	90°X0'02"

0436-027
57/119
Pet. 84-7

Meridian Surveying and mapping inc.
2000 LOMBARD STREET
WEST PALM BEACH, FL.
DRAWN M.H.C. DATE JAN. 1987
CHECKED M.A.M. SCALE 1" = 50'
DRAWING NO. 86-P-110
HUNTINGTON
PART OF
THE POLO CLUB P.U.D.